

# WOBBLE WELDING HEAD

## 摆动头



## 技术参数

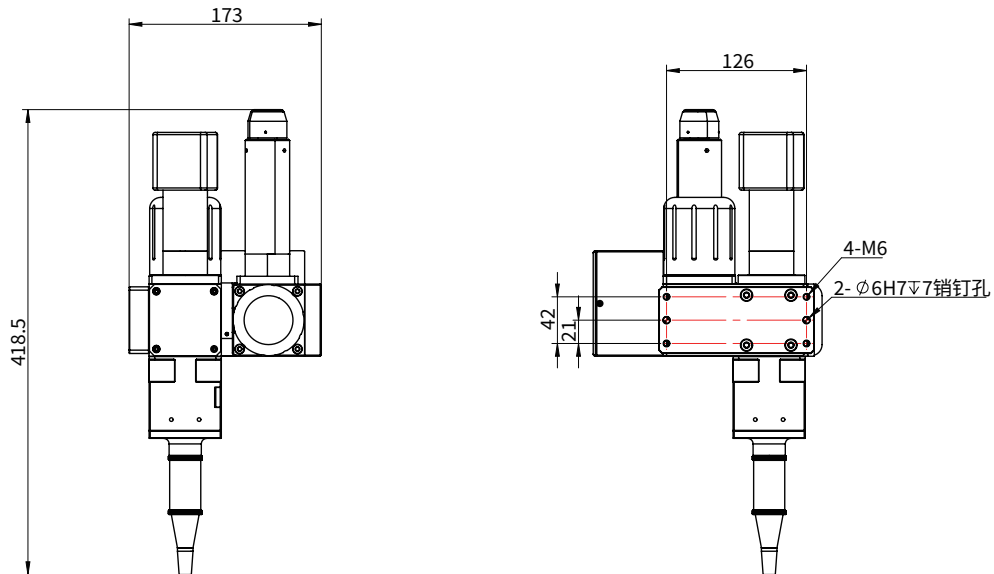
### TECHNICAL PARAMETERS

摆动头 Wobble Welding Head		
最大激光功率	Maximum laser power	2000W
激光波长	Laser wavelength	1070±10nm
准直镜焦距	Collimating Lens focal length	100mm
聚焦镜焦距	Focal length	200/250/300mm
焊接范围	Welding range	5×5mm
最大焊接频率	Maximum welding frequency	150Hz (5×5范围下)
光纤连接方式	Fiber connection type	QBH
通光孔径	Clear aperture	20mm
工作温度	Operating temperature	25±10°C
重量	Weight	7Kg

## 上位机软件界面 SOFTWARE INTERFACE



## 外形尺寸图 TECHNICAL DRAWING



**ScannerOptics 思特光学**

深圳市思特光学科技有限公司  
Scanner Optics Co., Ltd.

广东省深圳市宝安区西乡街道桃花源科技创新园B2&B10栋  
Building B2&B10, Taohuayuan Science and Technology Innovation Park,  
Xixiang Street, Bao'an District, Shenzhen City, Guangdong Province, China.



www.scanneroptics.cn / www.scanneroptics.com  
0755-2304 1055  
hansscanner@hanslaser.com